

DOMINA CORAL BAY

RESORT, SPA & CASINO



DOMINA CORAL BAY

RESORT, SPA & CASINO



Total area of the Resort 1 000 000 m2

DOMINA CORAL BAY

RESORT, SPA & CASINO



Opening date	1994
Last renovation	2009
Hotel's category	5*
Total area	1 000 000 m2
Location	Sharm El Sheikh, South-Sinai Egypt
Distance to the beach	First sea line; beach length – 1800 m.

Elevator	Four in the main building
Distance to International Airport Sharm El Sheikh	7 km
Distance to city center Naama Bay	5 km
Distance to Old Market	12 km
Telephone:	+206936301510-9
E-mail:	info@dominacoralbay.com
Official website:	www.dominacoralbay.com

BEACH



Total beach length 1800 m

Main Beach

Sultan Beach

Prestige Beach



DIVING CENTER SHEIKH COAST



The best diving in Sharm El Sheikh is only with Domina Sheikh Coast. The Center, which is under Italian management, has been considered the most exclusive and comfortable diving center in Sharm El Sheikh since 1994. Many years of experience, professional instructors and qualified staff are guarantying unforgettable emotions and memories.

Domina Sheikh Coast is the only diving center in Sharm el Sheikh with a PRIVATE PIER just a few meters from the center itself, allowing its guests to go out to sea every day on our private yachts directly from the hotel.

SALT LAKE



Artificially created lake with sea water. The total area of the lake is 268 meters, the maximum depth is 4 meters.

Available daily for Domina King's Lake and Domina Prestige guests.

7 SWIMMING POOLS



Name	Size m2	Location
Main Pool	587	At the center of the Hotel
Pool Bellavista	625	In front of Bellavista building 55
Pool Sultan	595	In front of the Domina Sultan Pool building
Pool Harem	350	Above Harem reception
Pool Elisir	485	In the middle of the Domina Elisir building
Pool Prestige 53	220	At Domina Prestige
Pool Prestige 52	96	At Domina Prestige
Floating pools	150/200	On the main beach

ROOMS

Rooms categories	Size m2	Number of rooms	Building
Domina Oasis	45	221	32/33/34/37/38/39/58/ 59
Domina Bellavista	38	160	55
Domina Aquamarine Pool	33	100	42
Domina Aquamarine Beach	29/39	148	43/44
Domina Sultan Beach & Pool	39	183	47/51/54/56/57
Domina Harem Deluxe	45	113	60/61
Domina Harem Junior Suite Duplex	65	47	60/61
Domina King's Lake	39	40	45
Domina Elisir Thalasso & SPA	47	82	65
Domina Prestige Sea & Pool	38/47	46	52/53

DOMINA OASIS



	Size	Description
Domina Coral Bay Oasis	45 m2	<p>2 single beds – mini-bar (water and soft drinks, replenished upon arrival free of charge) – satellite TV – direct dial telephone – Wi-Fi – bathroom with shower, toilet, bidet & hair dryer – air conditioning (cooling/ heating) , safe (free of charge) – sofa – balcony. Garden or sea view.</p> <p>Maximum occupancy: 2+2 or 3+1</p>

DOMINA BELLAVISTA



	Size	Description
Domina Coral Bay Bellavista	38 m2	<p>2 single beds – mini-bar (water and soft drinks, replenished upon arrival free of charge) – satellite TV – direct dial telephone – Wi-Fi – bathroom with shower, toilet, bidet & hair dryer – air conditioning (cooling/ heating) , safe (free of charge) – sofa – balcony. Pool or sea view.</p> <p>Maximum occupancy: 2+1</p>

DOMINA SULTAN BEACH & POOL



	Size	Description
Domina Coral Bay Sultan Beach	39 m2	<p>2 single beds – mini-bar (water and soft drinks, replenished upon arrival free of charge) – satellite TV – direct dial telephone – Wi-Fi – bathroom with shower, toilet, bidet & hair dryer – air conditioning (cooling/ heating) , safe (free of charge) – sofa – balcony. Sea view.</p> <p>Maximum occupancy: 2+1</p>
Domina Coral Bay Sultan Pool	39 m2	<p>2 single beds – mini-bar (water and soft drinks, replenished upon arrival free of charge) – satellite TV – direct dial telephone – Wi-Fi – bathroom with shower, toilet, bidet & hair dryer – air conditioning (cooling/ heating) , safe (free of charge) – sofa – balcony. Pool and sea view.</p> <p>Maximum occupancy: 2+1</p>

DOMINA AQUAMARINE BEACH & POOL



	Size	Description
Domina Coral Bay Aquamarine Beach	29-39 m2	2 single beds or 1 double bed – mini-bar (water and soft drinks, replenished upon arrival free of charge) – satellite TV – direct dial telephone – Wi-Fi – bathroom with shower, toilet, bidet & hair dryer – air conditioning (cooling/ heating) , safe (free of charge) – sofa – balcony. Sea view. Maximum occupancy: 2+2/ 3+1
Domina Coral Bay Aquamarine Pool	33 m2	2 single beds – mini-bar (water and soft drinks, replenished upon arrival free of charge) – satellite TV – direct dial telephone – Wi-Fi – bathroom with shower, toilet, bidet & hair dryer – air conditioning (cooling/ heating) , safe (free of charge) – sofa – balcony. Pool or garden view. Maximum occupancy: 2+1

DOMINA HAREM



	Size	Description
Domina Coral Bay Harem Deluxe	45 m2	2 single beds – mini-bar (water and soft drinks, replenished upon arrival free of charge) – satellite TV – direct dial telephone – Wi-Fi – bathroom with shower, toilet, bidet & hair dryer – air conditioning (cooling/ heating) , safe (free of charge) – sofa – balcony. Sea, Pool or Garden view. Maximum occupancy: 2+1
Domina Coral Bay Harem Junior Suite Duplex	65 m2	1 double bed – living room – mini-bar (water and soft drinks, replenished on arrival free of charge) – satellite TV – direct dial telephone – Wi-Fi - 2 bathrooms with Jacuzzi and separate shower, toilet and bidet – hair dryer – air conditioning (cooling /heating), safe (free of charge) – sofa – balcony. Sea, Pool or Garden view. Maximum occupancy: 3+1

DOMINA KING'S LAKE



	Size	Description
Domina King's Lake	39 m2	<p>2 single beds or 1 double bed – mini-bar (water, soft drinks & snacks replenished upon arrival free of charge) – tea/coffee set – satellite TV – direct dial telephone – Wi-Fi – bathroom with shower, toilet, bidet & hair dryer – air conditioning (cooling/ heating) , safe (free of charge) – sofa – balcony. Sea view or Sea & Lake view.</p> <p>Maximum occupancy: 2+1</p>

DOMINA ELISIR THALASSO & SPA



	Size	Description
Domina Elisir Thalasso & SPA	47 m2	2 single beds or 1 double bed – mini-bar (water, soft drinks & snacks replenished upon arrival free of charge) – tea/coffee set – satellite TV – direct dial telephone – Wi-Fi – bathroom with bath, toilet, bidet & hair dryer – walk-in wardrobe – air conditioning (cooling/ heating) – safe (free of charge) – sofa – balcony. Pool or Garden view. Maximum occupancy: 2+2/ 3+1

DOMINA PRESTIGE



	Size	Description
Domina Coral Bay Prestige	39 m2	1 double bed – mini-bar (water, soft drinks, beer & snacks replenished daily free of charge) – satellite TV – direct dial telephone – Wi-Fi – bathroom with bath or shower, toilet and bidet – hair dryer – air conditioning (cooling /heating), safe (free of charge) – sofa – balcony. Sea or Pool view. Maximum occupancy: 2+1
Additional service in the rooms	VIP fruit basket upon arrival, tea/coffee set replenished daily; VIP snacks replenished daily; bathrobes & slippers for adults and children, turndown service (cleaning 2 times a day - morning and afternoon), pillow menu, laundry with a 25% discount.	

3 OPEN BUFFET RESTAURANTS



	Meal	Style	Working hours
Coral	Breakfast	Open buffet	07:30 – 10:00
	Lunch		12:30 – 14:30
	Dinner		19:00 – 21:30
Spices	Breakfast	Open buffet	07:30 – 10:00
	Lunch		12:30 – 14:30
	Dinner		19:00 – 21:30
Il Giardino	Breakfast	Open buffet	07:30 – 10:00
	Lunch		12:30 – 14:30
	Dinner		19:00 – 21:30

8 A LA CARTE RESTAURANTS



Name	Meal	Cuisine	Working hours	Reservation
La Terrazza	Lunch/ Dinner	Italian	12:30 – 23:00	No reservation required
La Piazzetta	Dinner	Italian	19:30 – 23:00	No reservation required
Steak House	Dinner	BBQ	19:30 – 23:00	No reservation required
Blue Lake	Breakfast/ Lunch	Italian	08:30 – 18:00	No reservation required
Coral Bay Cafe	Breakfast	Italian	08:00 – 11:00	No reservation required
	Lunch		13:00 – 17:00	
	Dinner		19:30 – 00:00	
The Beach	Lunch/Dinner	Italian	13:00 – 00:00	No reservation required
Alibaba	Dinner	Italian	10:00 – till sunset	No reservation required
Venezia	Dinner	Sea Food	19:30 – 23:00	No reservation required

12 BARS

Bar	Location	Working hours
Main Beach Bar	Main Beach	10:00 – till sunset
Sultan Beach Bar	Sultan Beach	10:00 – till sunset
Main Pool Bar	Main Pool	10:00 – till sunset
Harem Pool Bar	Harem Pool	10:00 – till sunset
Harem Lobby Bar	Reception Harem	10:00 – 00:00
Sultan Pool Bar	Sultan Pool	10:00 – till sunset
Pool 55 Bar	Bellavista Pool	10:00 – till sunset
Elisir Lobby /Pool Bar	Reception Elisir	24 hours
Pergola Terrace Bar	Pleasure Island (center of the Resort)	Sunrise – till 00:00
Red Sea Lobby Bar (extra charge)	Main Reception(Oasis & Aquamarine)	08:00 – 00:00
Prestige Lobby Bar	Reception Prestige	08:00 – 23:00
Coral Bay Café	Pleasure Island (center of the Resort)	08:00 – 00:00



SPA ELISIR



Elisir SPA is synonym of relaxation and comfort. A unique center with marvelous pools Jacuzzis' and waterfalls. One of the largest SPA complexes on the coast, offers a wide range of services for body and mind retreat: thalassotherapy, Knipp treatments, hydro massage, Turkish bath, fitness center, body treatments and massages.



ENTERTAINMENT AND SPORT



Daytime activities:

- Bocce
- Aqua aerobics
- Beach volleyball
- Pilates
- Dance lessons
- Darts
- Water aerobics
- Pool games
- Beach football

Afternoon program

- Table tennis competition
- Aqua aerobics
- Beach volleyball
- Pilates
- Zumba
- Yoga
- Aerobics

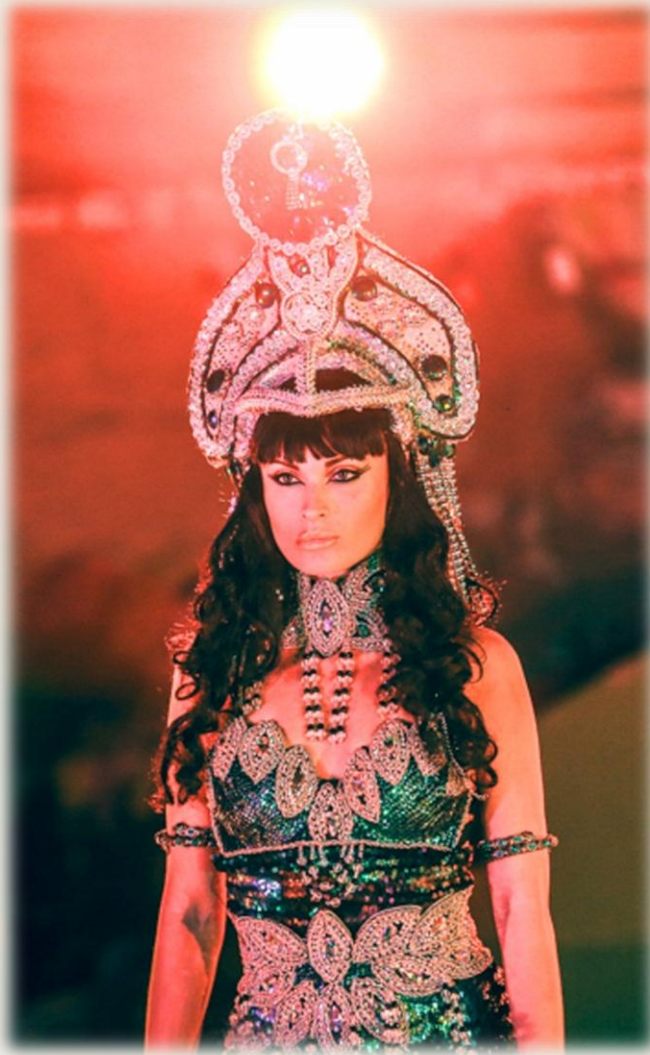


EVENING SHOW PROGRAM

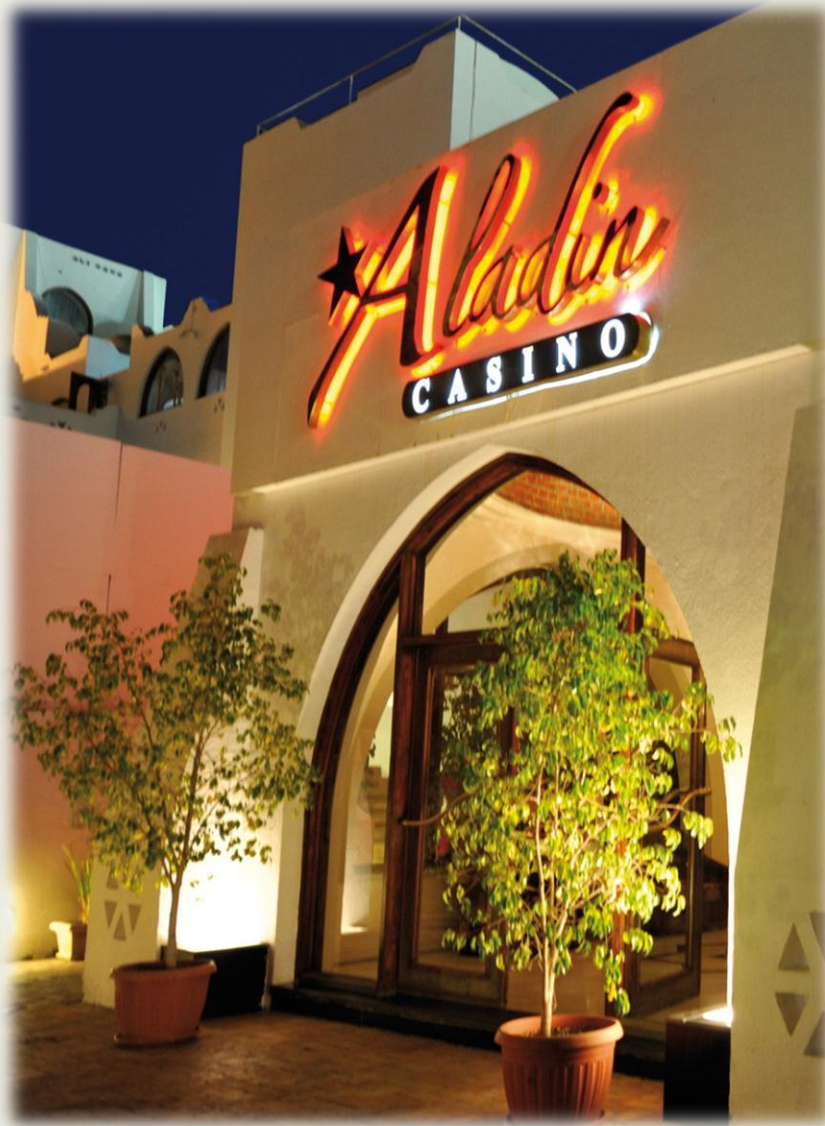


CLEOPATRA

DESERT DINNER SHOW



CASINO ALADIN



KIDS CLUB CORAL



Coral Kids Club is open for children from 4 to 12 years old. Children under 4 years old are invited to the Club accompanied by an adult.

Let your children enjoy their holiday in their own way, the club offers an extensive program throughout the day, supervised by our professional animation team. Games, books, crafts, “treasure hunting”, pizza cooking lessons for young chefs and much more.

Working hours: 10:00 – 18:00; 21:00 – 23:00



CONGRESS CENTER



Congress Center	Capacity					
	Theatre	Class Room	Banquet	U - shape	Boardroom	Cabaret
Ballroom (1+2+3)	1000	500	500	200	150	300
Amerigo Vespucci 1	300	140	200	65	60	120
Giovanni da Verrazzano 2	250	130	150	50	45	90
Marco Polo 3	250	130	150	50	45	90
Caboto	65	50	30	22	18	36
Fratelli Vivaldi	40	20	-	10	12	-
Umberto Nobile	20	12	-	-	10	-
Vittorio Botego	20	12	-	-	10	-

See You in Domina Coral Bay...

